

Technical Data

SPECIAL APPLICATIONS

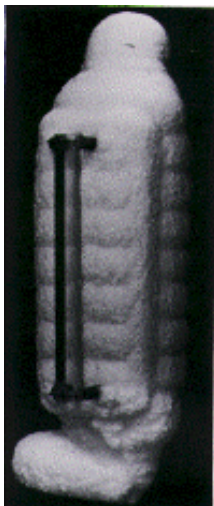
LIQUID LEVEL GAUGES - REFLEX & TRANSPARENTS

NON-FROSTING – HEATING AND COOLING – ILLUMINATOR

CT-RH-A-02-ENG

Non-Frosting

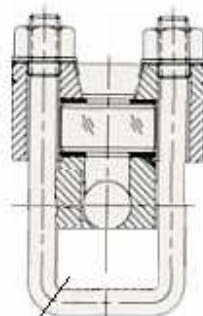
Non-Frosting consist in a transparent piece in direct contact with the gauge glass. It extends the vision so frost cannot build up across the vision slot.



Heating and Cooling devices

Heating or cooling is required when the temperature of the liquid in the gauge must be controlled. Heating is typically used protect the liquid from freezing, to lower liquid viscosity to improve response lo level changes and also when the temperature of the liquid in the gauge and the vessel must remain the same.

- **Internal Tubes** The tube passes through the inside of the gauge and is in direct contact with the liquid. An internal heating or cooling tube can be used in tubular or flat glass gauges.
- **External Chambers** do not contact the liquid inside the gauge. Transparent gauges are available with an external chamber welded to one or both sides of the liquid chamber. Reflex gauges are equipped with the external chamber welded to the rear of the liquid chamber.



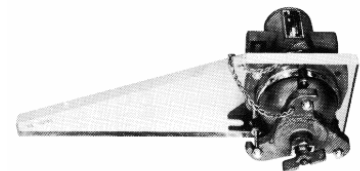
Câmara exterior

Illuminator

Illuminators are designed for liquid observation on transparent gauges when ambient light is insufficient.

The diffusion of light is over the entire length of the gauge glass, with no glare spots or blinding areas.

- Available for Transparent Liquid Level Gauges.
- **Low-Cost Lightning:** Lightning of the illuminator is by a standard or low small bulb, witch offers substantial saving in electricity.
- All units are dust-tight and explosion-proof approved Class 1, Division II, Groups B, C and D service.



Technical Data

ACCESSORIES

LIQUID LEVEL GAUGES - REFLEX & TRANSPARENTS

CT-RH-A2-02-ENG

Insulation Blankets

Insulation Blankets for Reflex, Transparent, Tubular, Magnetic Liquid Level Gauges and Valves, helps maintain a constant temperature when fitted over flat glass and heated gauges. Assures corrosion resistance and strength, while protecting against heat loss, chemical and weather damage

- Available for Liquid Level Gauges, Reflex and Transparent and Magnetic Level Gauges.
- Lightweight, flexible, reusable insulation for valves, gauges and other instrumentation.
- Reduces heat or cold loss at temperatures from:
-65°F (-55°C) to 1000°F (540°C)



Protectors for Tubular Level Gauges

Are used to prevent from external causes, the glass breakage. They also help to minimize the possibility of injury or damage should the gauge glass pressure rating be exceeded

- Two styles: Sheet metal type, plastic window protectors are available.
- Available in sizes to fit all tubular Gauges.
- Easy to install.



Mica Shields

For Reflex and Transparents Level Gauges, are made of the highest quality ruby mica, cut and punched to accurate specified dimensions and thickness, having very high degree of thru vision transparency - rigidly tested and inspected to eliminate imperfections.

Gauge scales

Are constructed of corrosion resistant materials. They are available in mm, cm, inches, etc.